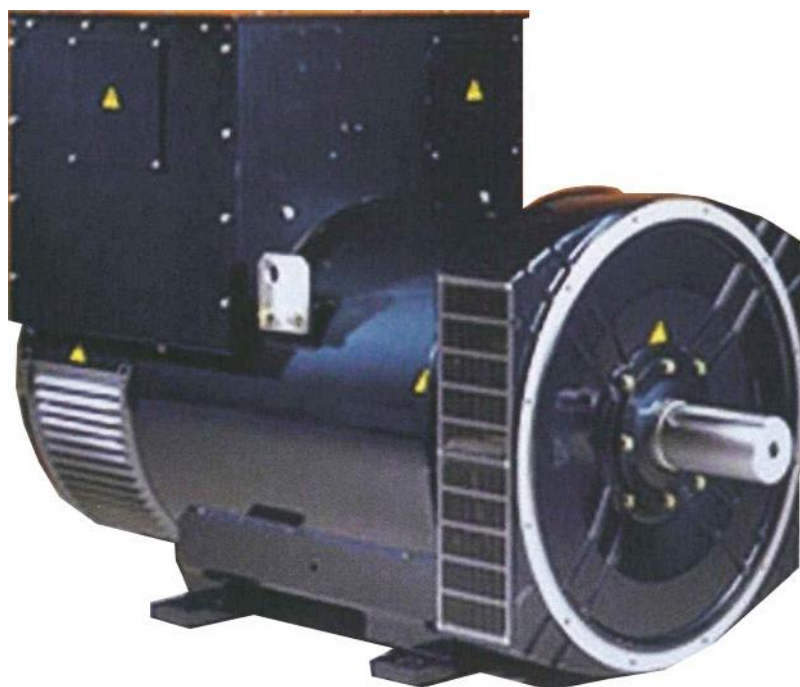




DG 5



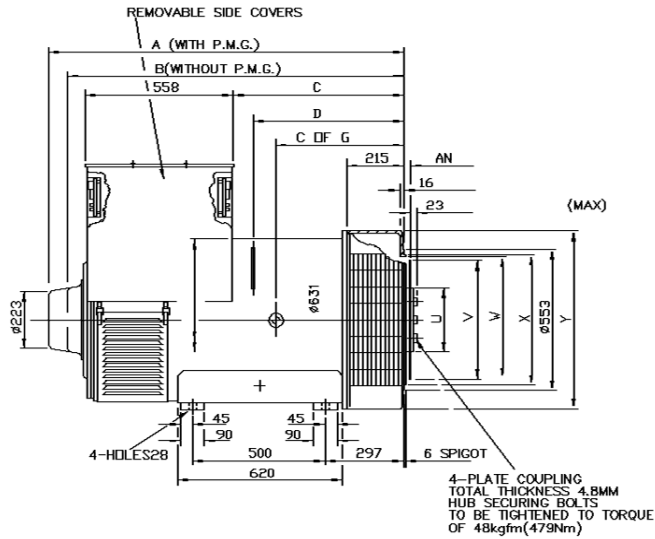
maximizing your energy

Try the best!

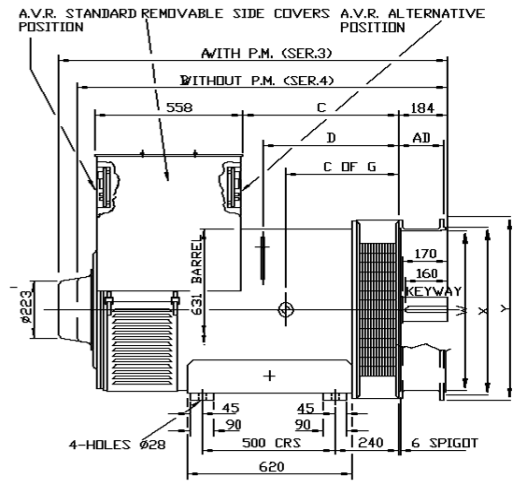
DG5		3 Phase H insulation industrial							
Voltage		50 Hz 1500rpm				60 Hz 1800rpm			
Series Star		380	400	415	440	416	440	460	480
Parallel Star		190	200	208	220	208	220	230	240
Series Delta		220	230	240	254	240	254	266	277
DG 544C	KVA	450	450	450	450	525	550	581	594
	KW	360	360	360	360	420	440	464.8	475.2
	Efficiency (%)	93.8	94.1	94.3	94.6	93.7	93.9	94	94.2
	Power input (KW)	384	383	382	381	448	469	494	504
DG 544D	KVA	500	500	500	500	575	594	625	644
	KW	400	400	400	400	460	475.2	500	515.2
	Efficiency (%)	94.1	94.5	94.5	94.8	94	94.3	94.4	94.6
	Power input (KW)	425	423	423	422	489	504	530	545
DG 544ES	KVA	563	563	563	563	635	650	670	700
	KW	450	450	450	450	508	520	536	560
	Efficiency (%)	94.3	94.4	94.6	94.7	94.2	94.3	94.5	94.6
	Power input (KW)	477	477	476	476	539	551	567	592
DG 544EL	KVA	625	625	625	652	700	735	755	765
	KW	500	500	500	500	560	588	604	612
	Efficiency (%)	94.6	94.7	94.8	94.8	94.7	94.8	94.9	95
	Power input (KW)	529	528	527	527	591	620	636	644
DG 544F	KVA	670	670	670	650	738	775	800	825
	KW	536	536	536	520	590.4	620	640	660
	Efficiency (%)	94.6	94.9	95.0	95.3	94.6	94.8	94.9	95.1
	Power input (KW)	567	565	564	546	624	654	674	694

DG5		3 Phase F insulation marine							
Voltage		50 Hz 1500rpm				60 Hz 1800rpm			
Series Star		380	400	415	440	416	440	460	480
Parallel Star		190	200	208	220	208	220	230	240
Series Delta		220	230	240	254	240	254	266	277
DG 544C	KVA	400	400	400	380	475	475	515	515
	KW	320	320	320	304	380	380	412	412
	Efficiency (%)	94.2	94.3	94.5	94.6	94	94.1	94.2	94.3
	Power input (KW)	340	339	339	321	404	404	437	437
DG 544D	KVA	450	450	450	430	500	515	550	575
	KW	360	360	360	344	400	412	440	460
	Efficiency (%)	94.6	94.7	94.8	94.9	94.7	94.6	94.8	94.8
	Power input (KW)	381	380	380	362	422	436	464	485
DG544ES	KVA	501	501	501	501	595	595	595	595
	KW	400	400	400	400	476	476	476	476
	Efficiency (%)	94.7	94.8	94.9	94.9	94.8	94.7	94.9	94.9
	Power input (KW)	430	430	430	430	511	511	511	511
DG 544EL	KVA	563	563	563	538	635	650	660	675
	KW	450	450	450	430	508	520	528	540
	Efficiency (%)	94.9	95	95	95.1	95.1	95.1	95.1	95.2
	Power input (KW)	475	474	474	453	534	547	555	567
DG 544F	KVA	575	600	630	610	675	713	750	775
	KW	460	480	504	488	540	570	600	620
	Efficiency (%)	94.5	94.7	94.8	95	95	95.1	95.3	95.5
	Power input (KW)	487	507	532	514	568	600	630	649

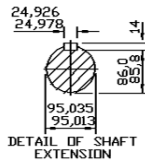
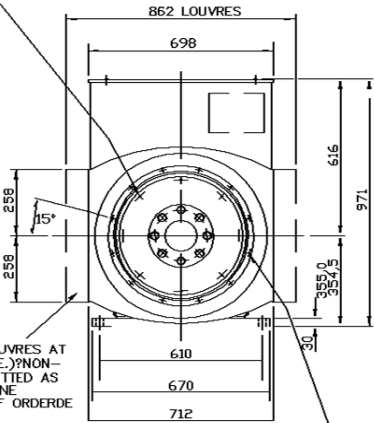
SINGLE BEARING



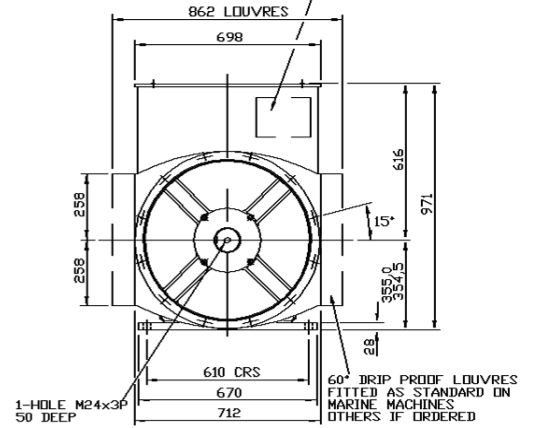
DOUBLE BEARING



8-HOLES 13.5 Ø ON 438.1 PCD



INDICATES POSITION OF A.V.R.



SINGLE BEARING DIMENSIONS					
CODE	A	B	C	D	C of G
DG 544C	1337	1266	642	568	555
DG 544D	1337	1266	642	568	575
DG 544ES	1337	1266	642	568	595
DG 544F	1412	1341	717	643	620

DOUBLE BEARING DIMENSIONS					
CODE	A	B	C	D	C of G
DG 544C	1464	1393	585	511	498
DG 544D	1464	1393	585	511	518
DG 544ES	1464	1393	585	511	538
DG 544F	1539	1468	660	586	565

FLANGE ADAPTOR						
S.A.E.No.	R	S	T	W	X	Y
00	12	14	850.9	772	787.3	882
0	12	14	679.5	632	647.6	711
1/2	12	14	619.1	568	584.1	700
1	12	12.7	530.2	496	511.1	700

FLANGE ADAPTOR							
S.A.E.No.	R	S	T	W	X	Y	E
00	16	14	850.9	772	787.3	882	170
0	16	14	679.5	634	647.6	711	170
1/2	12	14	619.1	569	584.1	648	150
1	12	12.7	530.2	496	511.1	553	170
12V135	12	14.5	625.0	589	604.9	660	162

DISC COUPLING						
S.A.E.No.	AN	AR	AS	AT	U	V
14	25.40	8	13.5	438.1	250	466.6
18	15.87	6	16.7	543.0	250	571.4
21	0	12	16.7	641.3	250	673.0

SINGLE BEARING SHIPPING DETAILS			
CODE	Net weight Kg	Gross weight Kg	packing
DG 544C	1250	1350	170X95X116
DG 544D	1358	1450	170X95X116
DG 544ES	1498	1598	170X95X116
DG 544F	1653	1753	170X95X116

DOUBLE BEARING SHIPPING DETAILS			
CODE	Net weight Kg	Gross weight Kg	packing
DG 544C	1250	1350	170X95X116
DG 544D	1358	1450	170X95X116
DG 544ES	1498	1598	170X95X116
DG 544F	1653	1753	170X95X116

MAIN CHARACTERISTIC DESCRIPTION

GENERAL

Alternator full range covers ratings from 5kVA to 1386kVA, so meeting the most part of needs for industrial, marine, commercial, construction, mining and telecommunications, both for prime or standby power generation.

ALTERNATOR CONSTRUCTURE

Ac generators are self-excited, self-regulated, and supplied with regulator and inbuilt booster.

COMPLIANCE WITH STANDARDS

The generators are designed in compliance with IEC60034-1/60034-2, BS4990 & 5000, VDE0530, NEMA MG1-2006, CSA C/UL. Certificate ISO 2000, CE conform to the requirements of IEC60034, certificate no. No. 01157 by NQA Certification Co., Ltd.

MECHANICAL FEATURES

The generators are available in either single-bearing or double-bearing.

Single-bearing construction has international general SAE flange adaptors and SAE disc couplings. It ensures the alignment during the assembly operation of generator to the engine.

Double-bearing construction has IMB34 standard forms. It has all SAE adaptors for option. Special constructions on request. Double bearing alternators are balanced with 1/2 key.

All alternators can operate in both directions: clockwise and counterclockwise.

ELECTRICAL FEATURES

OVERLOADS&SHORT CIRCUIT CURRENT

Followings overloads are allowed:

10% for 1 hour

14% for 15 minutes

25% for 5 minutes

50% for 2 minutes

With the addition of an optional Permanent Magnet, alternators can sustain 300% short circuit current for 10 seconds.

UNBALANCED LOAD

The alternators permit an unbalanced load of 25% rated current. The deviation of line voltage is less than 5%.

INSULATION

The insulation system is class 'H'

Vacuum pressure Impregnation

Windings and Electrical Performance

Generator stator is wound to 2/3 pitch. This eliminates triplen (3rd, 9th, 15th...) harmonics on the voltage waveform and is found to be the optimum design for trouble-free supply of non-linear loads.

TELEPHONE INTERFERENCE

TIF(as defined by BS4999 Part 40) is better than 2%. TIF(as defined by ASAC50.12) is better than 50.

RADIO INTERFERENCE

The alternators are supplied with interference suppression grade N to VDE 0875.

DAMPER WINDING

This arrangement provides the alternator with excellent damping against torsional vibrations that occurs during changes in load and when running in parallel.

ACCESSORIES & OPTION

Droop kit for sharing of reactive current during parallel operation

- Remote voltage potentiometer
- PT100 thermal protection embedded in stator windings
- Anti condensation heaters
- IP23 protection
- Special treatment for damp-saline or corrosive environment
- Permanent Magnet
- Control panel with LCD digital meter

GENERAL NOTES

All ratings are base in 40°C ambient temperature at 1000m altitude.

Site altitude exceeds 1000m above the sea level, (ambient temperature 40°C)

1000 mt. A.s.l.= 100%; 1500 mt. A.s.l.= 97%; 2000 mt. A.s.l.= 94%; 2500 mt. A.s.l.= 91%;

3000 mt. A.s.l.= 87%; 3500 mt. A.s.l.= 82%

Power factor cos. $\Phi < 0.8$

Cos. Φ 0.8~1= 100%; Cos. Φ 0.7= 96%; Cos. Φ 0.6= 92%; Cos. Φ 0.5= 91%; Cos. Φ 0.4= 90%

BELTRAME CSE S.R.L.

Via San Pio X, 104 / 35015 Galliera Veneta PD / T. +39.049.5965127

www.beltramecse.com